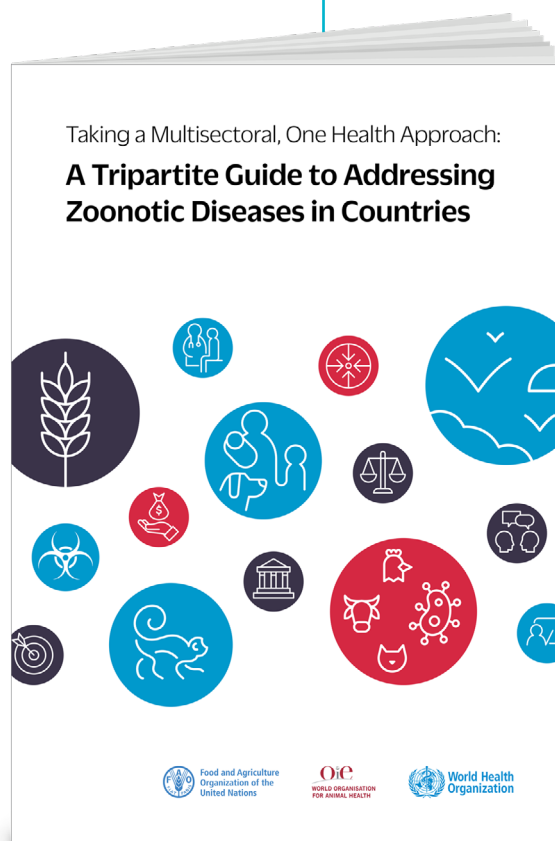


Joint Risk Assessment Operational Tool (JRA OT)

An Operational Tool of the Tripartite Zoonoses Guide

Assessing risk at the Human-Animal- Environmental Interface

Effectively identifying, assessing, managing, and reducing risks associated with zoonotic diseases through a multisectoral, One Health approach requires coordination and collaboration across human health, animal health, and environmental sectors. A facilitated approach can help guiding the various actors toward a comprehensive and consensual risk assessment. FAO, WHO and WOAH, supported by experts in this field, developed together the Joint Risk Assessment Operational Tool (JRA OT).



©WHO / Karen Reidy

- Support compliance with the International Health Regulations (2005) (IHR) and recommendations in the Performance of Veterinary Services (PVS).
- Inform relevant risk communication and risk management options for all sectors.
- Support One Health mechanism and improve zoonotic disease management in countries.

The JRA OT at a glance



©WHO / Andy Craggs



©WHO

What? A tool to assist countries to jointly assess a zoonotic disease or health concern at the human-animal-environment interface.

Who? All relevant ministries and stakeholders at the human-animal-environment interface.

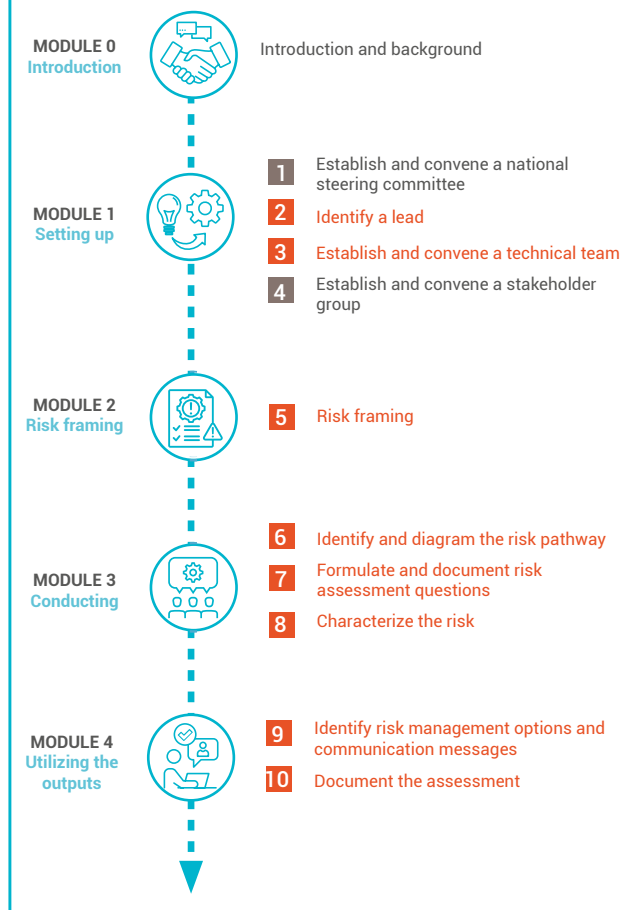
When? Best implemented prior to emergencies and can be conducted repeatedly as the risk may change over time.

Where? Can be organized through existing national coordination mechanisms or by local authorities.

How? 3-day workshop going through a step-by-step qualitative risk assessment, building on existing sector-specific risk assessments.

JRA OT MODULES AND STEPS

(required: ■, recommended: ■)



Why? Results provide decision makers with science-based advice for effective management of a zoonotic disease threat.

Contacts

Food and Agriculture Organization (FAO):
Zoonoses-Coordination@fao.org

World Health Organization (WHO):
HAI@who.int

World Organisation for Animal Health (WOAH):
woah@woah.org

For more information

FAO

WHO

WOAH

JRA OT Training for Implementers



WHO/WPE/HSP/CCI/HAI/2024.2

© World Health Organization (WHO), Food and Agriculture Organization of the United Nations (FAO) and World Organisation for Animal Health (WOAH), 2024. All rights reserved